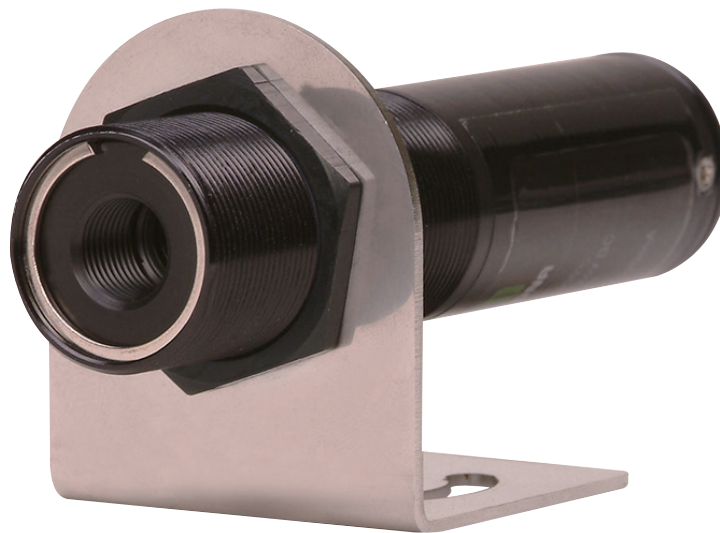


Non-Contact Infrared Temperature Sensor/Transmitter

IR - 20

Temperature Range: 0~400°C



GASDNA Co.,Ltd 393-17 Wonchang-dong, Seo-gu, Incheon, Republic of Korea

Tell: +82-32-623-7507

Fax: +82-32-623-7510

E-mail: sales@gasdna.com

Web: www.gasdna.com

<http://www.gasdna.com>

1. Features

IR-20 non-contact infrared thermometer measures the infrared wavelength emitted from the target spot and converts it to standard current signal output (4~20mA). It can measure from 0 °C to maximum 400 °C in the distance of 10:1 D:S (Distance to Spot)

Emissivity is 0.95 (fixed).

※Applications



Plastics, Fluids, Rubber, Coated components, Asphalt, Wood, Paper, Ceramics, Textiles, Glass, Food etc.

2. Ordering information

Code Number IR-20-□-□-□

MODEL	Description
IR-20	
Code A	Temperature Range
1	0~200 °C
2	0~400 °C
Z	Other
Code B	Output
N	DC 4~20mA
V	Voltage Output(1~5V)
Z	Other
Code C	Cable Length
1	3M
Z	Other

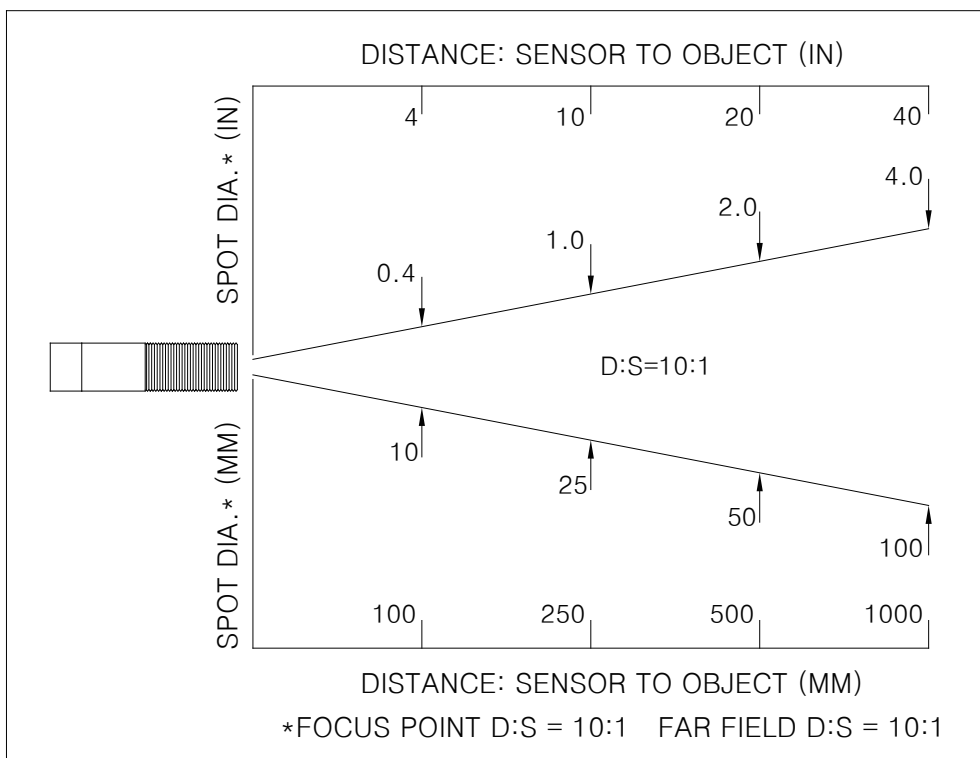
3. Accessories

품명	모양	용도	비고
Fixing nut		Sensor fixing nut	Basic accessory
Mounting bracket		Sensor mounting bracket	Basic accessory

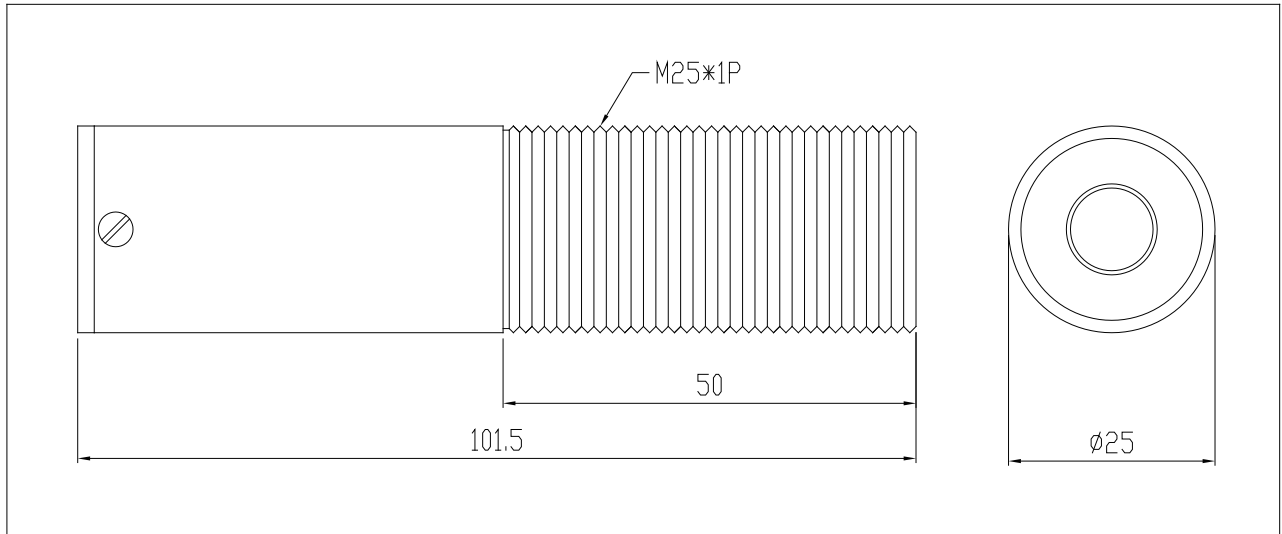
4. SPECIFICATIONS

Temperature Range	0~400℃
Device	Thermopile
Accuracy	±3%/F.S
Repeatability	±1% of Rdg
Field of View(D:S)	10:1
Optical spectrum wave	8~14μm
Responsive Time	500msec or below
Emissive rate	0.95 fixed
Analog Output	4~20mA, 1~5V(option)
Power	DC 20~24V(Max 50mA)
Ambient temperature(no water cooling)	0~70℃
Temperature Resolution	0.1℃
Warm up Period	1 to 2 minutes
Thermal Shock	About 30 minutes for 25℃ abrupt ambient temperature change.
Operating Relative Humidity	5~90%
Operating Ambient Temperature	-30~85℃
Waterproof	IP65,NEMA 4
Dimensions	∅36 × 110.5(L)
Casing material	Aluminum Alloy
Weight	150g
Cable length	3m,other

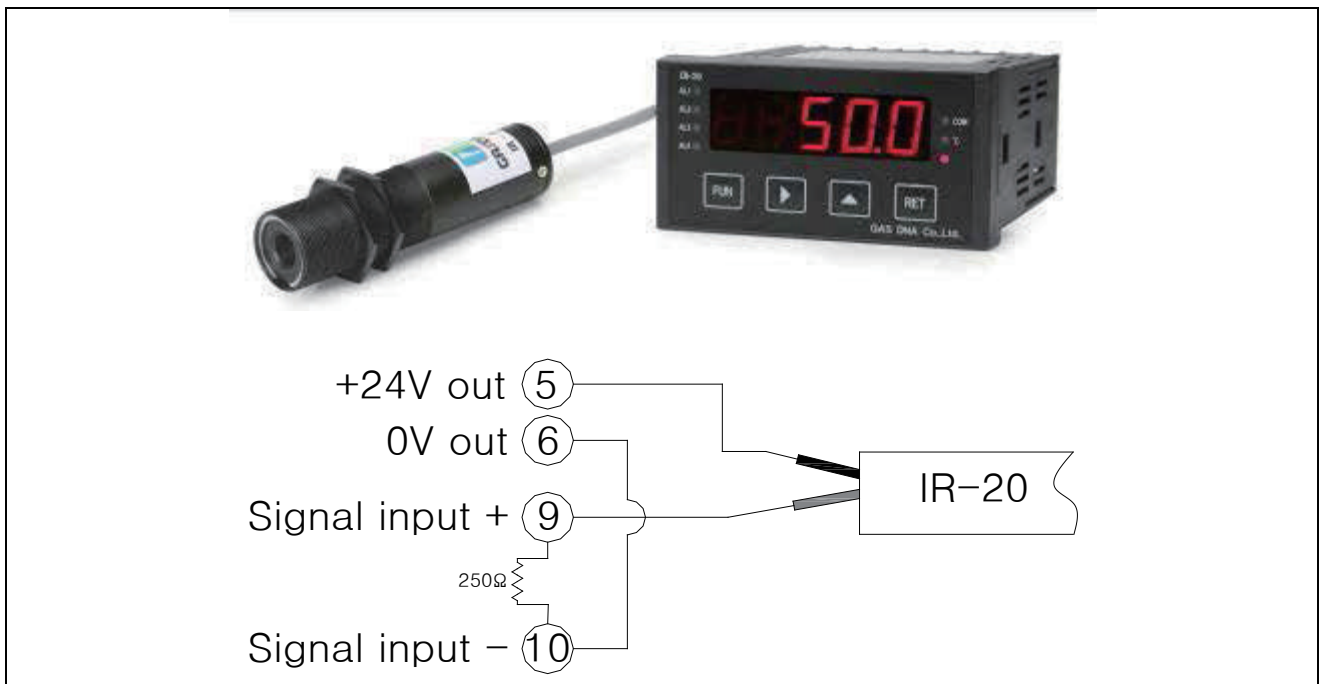
5. OPTICAL FIELD OF VIEW (DS 10:1)



6. IR-20 OUTSIDE DIMENSION




7. Electrical Connection



No.	Wire color	Usage
1	Red	Power 24VDC(+)
2	Black	Power signal input(4~20mA) +

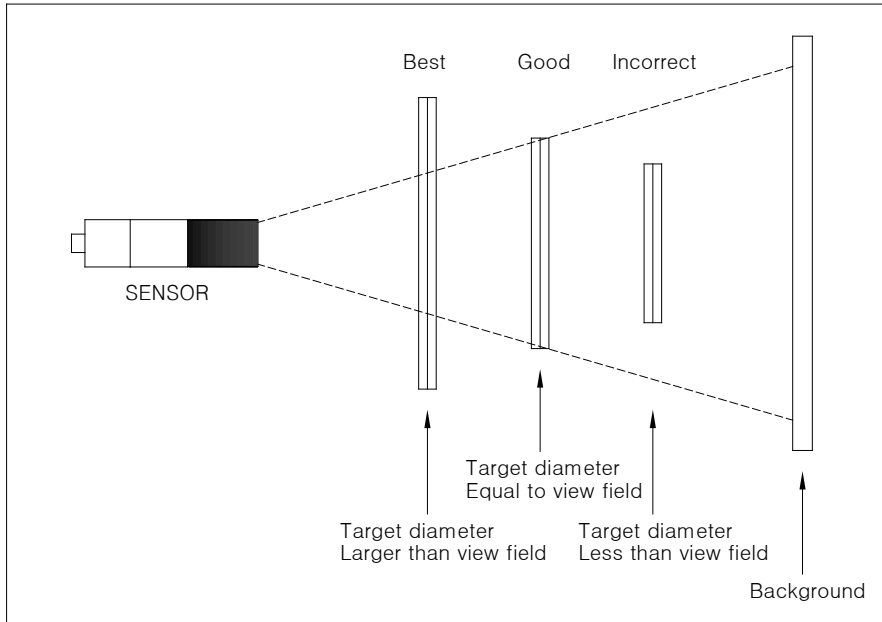
No.	Wire color	Usage
1	Red	Power 24VDC(+)
2	Black	Power VDC(-)
3	White	Power signal input (1~5V)+

8. Option

Name	Picture
Air-purge	
Up and down adjustable Bracket	
Indicator (Model No. DI-20)	
2 Inch LED Display	

9. Installation

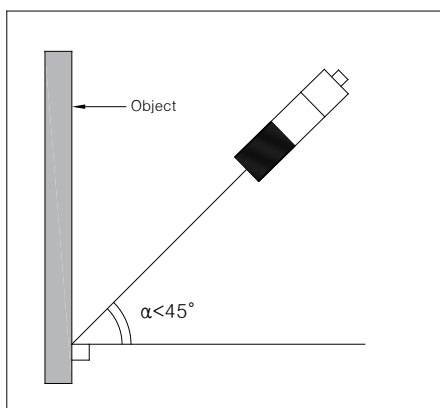
- Please make sure the target area is larger than the field of view.



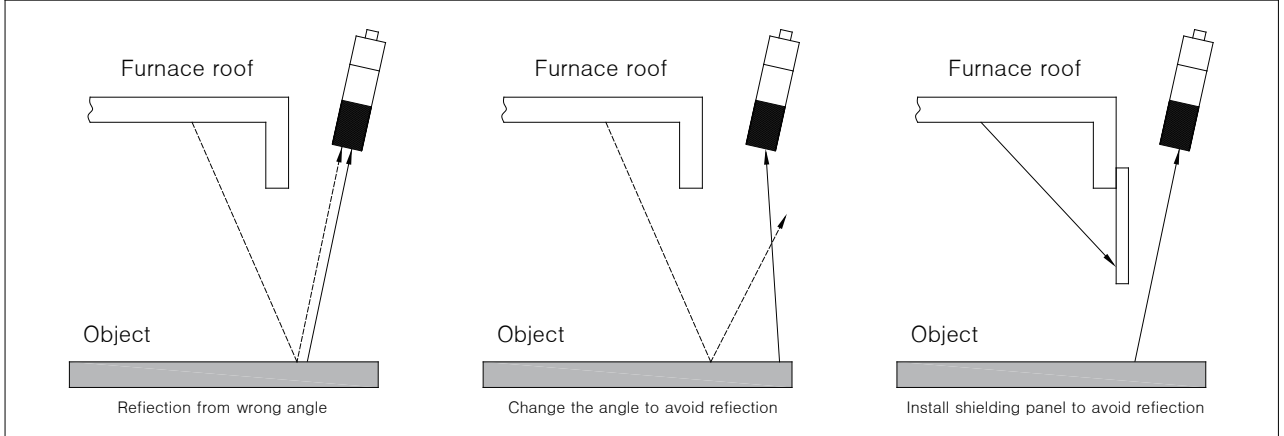
The spot size is decided by the distance from the sensor to the target.
Please refer to the 'section 5. Optical field of view' and make sure your target area is larger than the field of view.

- Please locate the sensor vertical against the target area.

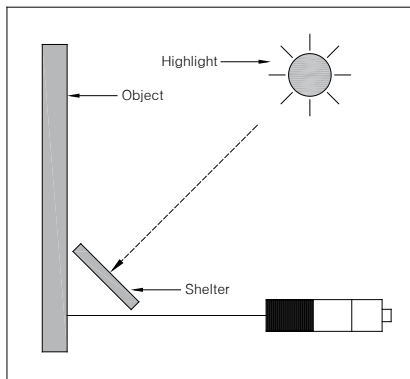
It is the best for you to install the sensor vertical against the target area or object. If it is not available, the sensor should be more than 45° against the target area. Otherwise, it can affect the measuring accuracy.



Please avoid the heat reflection from other high temperature objects



Please avoid highlight.



Please avoid electronic noise.

Please avoid the origins of high frequency and high voltage.
(Ex. Motor, Pump, high tension power line, and etc.)